

TOWNHOUSE-STYLE FOURPLEX ON A LARGE LOT IN ALAMEDA

Asking Price: \$1,995,000

2025 Central Avenue, Alameda, CA 94501



This large, approximately 4,950 square foot, townhouse-style fourplex is located on a 10,375 square foot lot with a 50' street frontage on Central Avenue. 2025 Central Avenue features two (2) two-story duplex structures, for a total of four (4) units, each of which is a 2-bedroom, 1-bathroom unit of approximately 1,200 square feet. The rear unit also has an additional 1/2 bath in an approximately 70 square foot detached structure off the patio. All units have a fireplace in the living room, a dining room, and a private brick patio with a brick wall off the living room. Three of the four units have plank hardwood floors on the lower level and stick hardwood floors on the upper level. Two of the four units also have bay windows in the living room.

Residents at 2025 Central Avenue pay for their own gas and electric service. Owner pays for water, sewer and garbage. The property is also served by a house electric meter that serves the coin-operated washer and dryer in the laundry room next to the four covered carports in the rear, at the end of the long driveway.

A quick stroll away is Alameda's ever-popular Park Street, which is known for its unique shops, a wide variety of restaurants, and the historic Alameda Theatre. 2025 Central Avenue also offers easy access to local and Transbay AC Transit bus line, schools, and shopping at the South Shore Shopping Center.

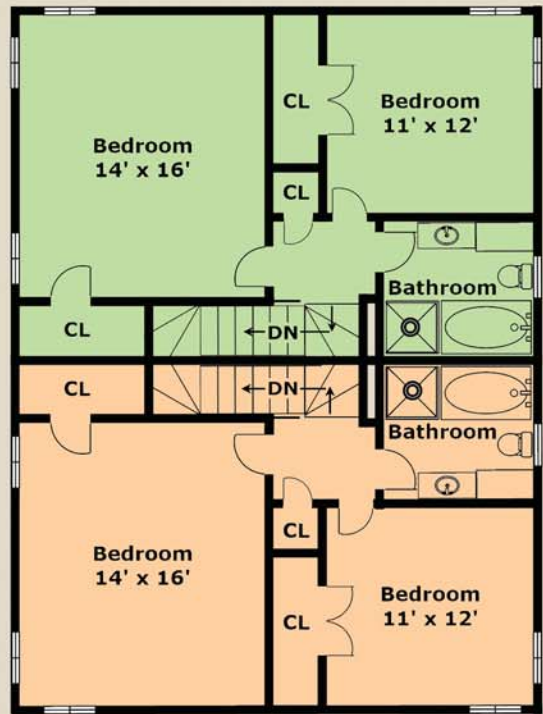
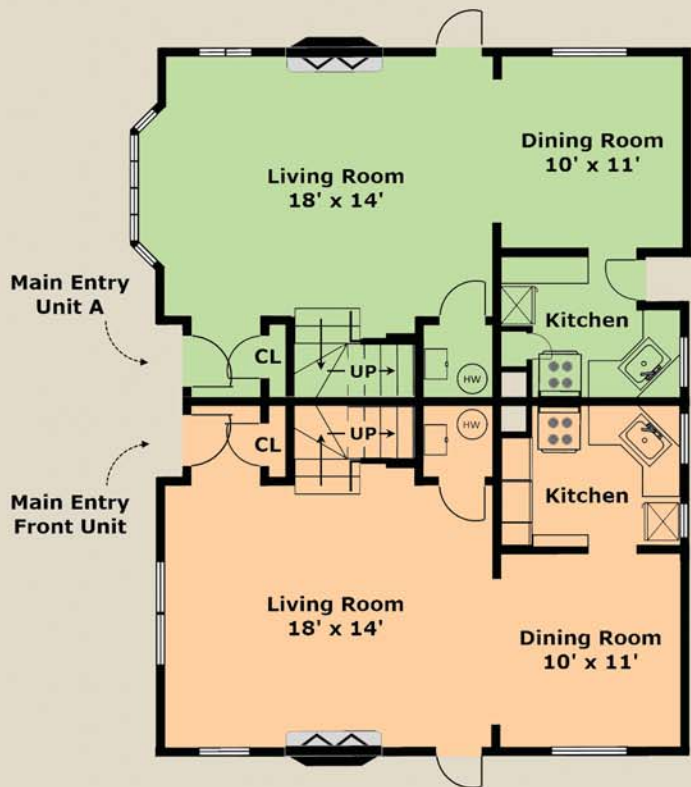
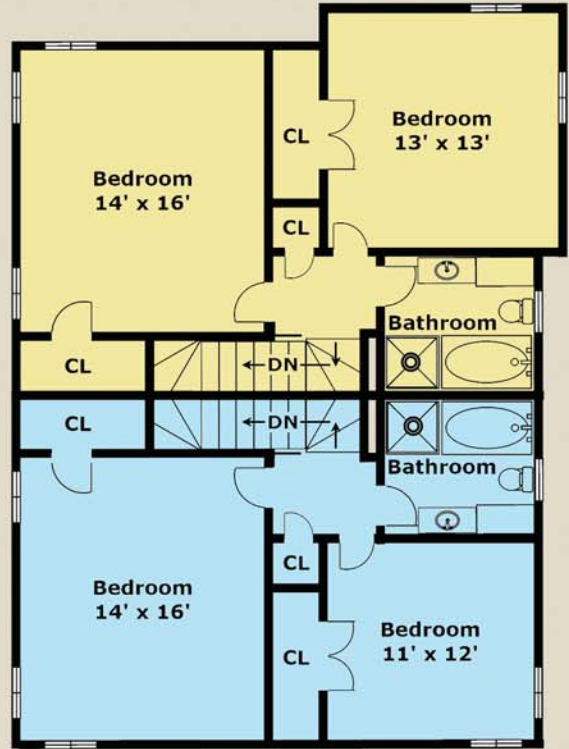
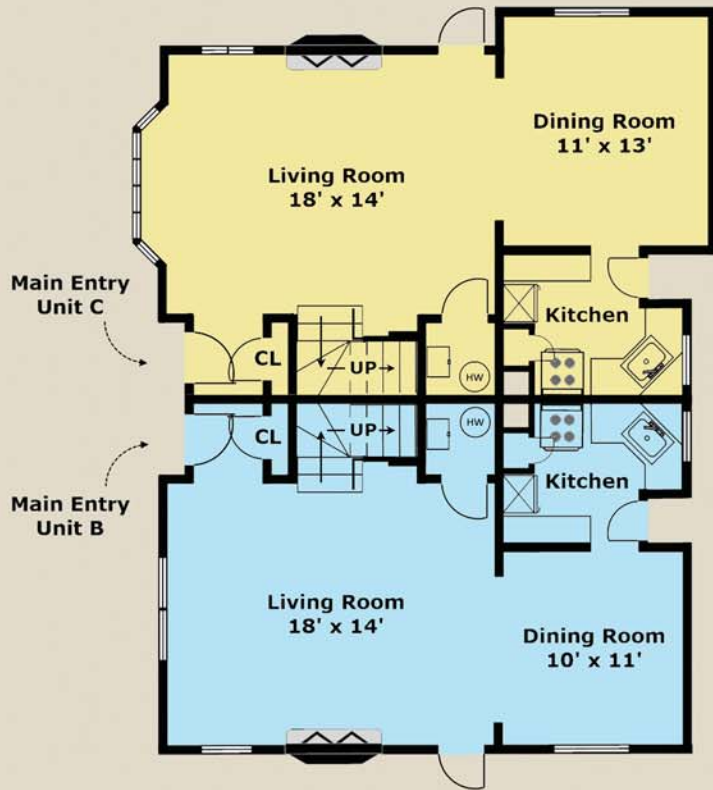
[Floor Plan on the reverse side](#)
www.Panavista.com/2025Central

Broker-of-Record: Ramesh
Ramesh@Panavista.com
DRE 00870283



(510) 523-0707
PANAVISTA REALTY
2503 Lincoln Avenue, Alameda

FLOOR PLANS FOR 2025 CENTRAL AVENUE, ALAMEDA



Lower Level

Upper Level

Layout and all measurements are approximate,
and not guaranteed to be either exact or to scale.