

EASTLAKE FOURPLEX IN CENTRAL ALAMEDA

Asking Price: \$1,495,000

2018 Central Avenue, Alameda, CA 94501



This large, approximately 3,402 square foot, Eastlake fourplex is located on a 10,500 square foot lot with a 75' street frontage on Central Avenue in the center of town. 2018 Central Avenue features a 2-bedroom, 1-bathroom unit on the lower level in the front, a 1-bedroom, 1-bathroom unit with a den on the upper level in the front, a 1-bedroom, 1-bathroom unit with a bay window on the lower level in the rear, and a 1-bedroom, 1-bathroom unit with a bay window on the upper level in the rear. All units have hardwood floors. Off to the left is a long driveway that leads to the backyard, four (4) 1-car garages, and access to the laundry room and a common area storage room for tenant's personal belongings.

Residents at 2018 Central Avenue pay for their own gas, electric and garbage service. Owner pays for water and sewer. The property is also served by a house electric meter and house gas meter that serves the coin-operated leased washer and dryer in the laundry room. Property is compliant with Alameda's sewer lateral Ordinance and its automatic gas shut-off valve Ordinance.

A quick stroll away is Alameda's ever-popular Park Street, which is known for its unique shops, a wide variety of restaurants, and the historic Alameda Theatre. 2018 Central Avenue also offers easy access to local and Transbay AC Transit bus line, schools, and shopping at the South Shore Shopping Center.

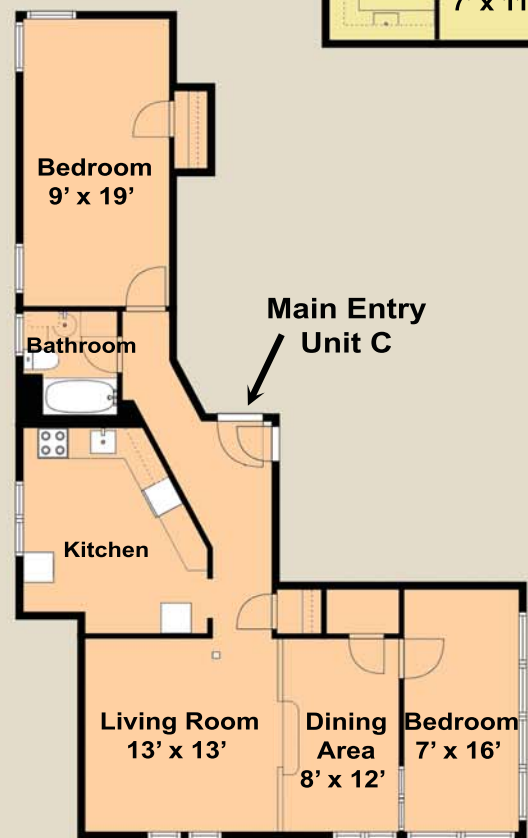
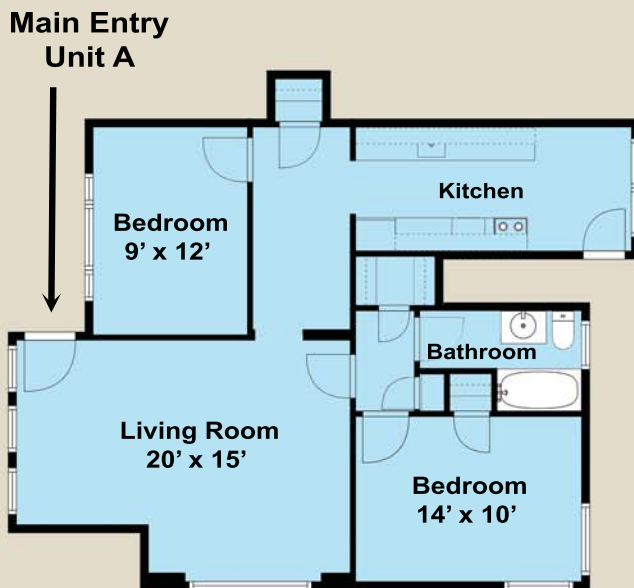
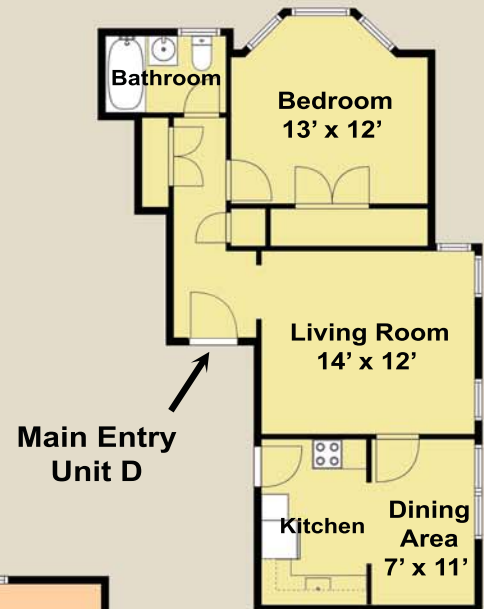
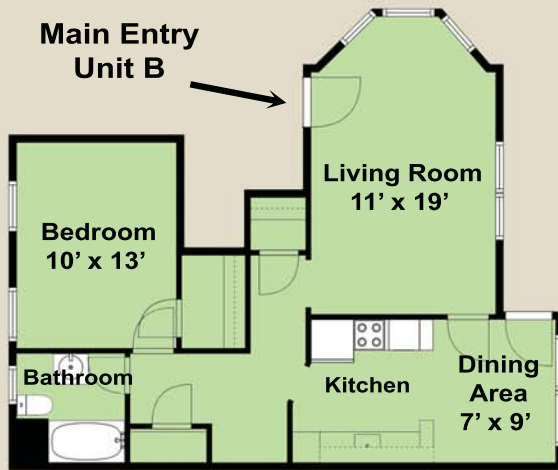
[Floor Plan on the reverse side](#)
www.Panavista.com/2018Central

Broker: Ramesh
Ramesh@Panavista.com
DRE 01225193



(510) 523-0707
PANAVISTA REALTY
2503 Lincoln Avenue, Alameda

FLOOR PLAN FOR 2018 CENTRAL AVENUE, ALAMEDA



Lower Level

Upper Level

Layout and all measurements are approximate, and not guaranteed to be either exact or to scale.