



DISTINCTIVE 4-BEDROOM, 2-1/2 BATH LANTERN BAY HOME ON HARBOR BAY

111 Sherwood Lane, Alameda, CA 94502

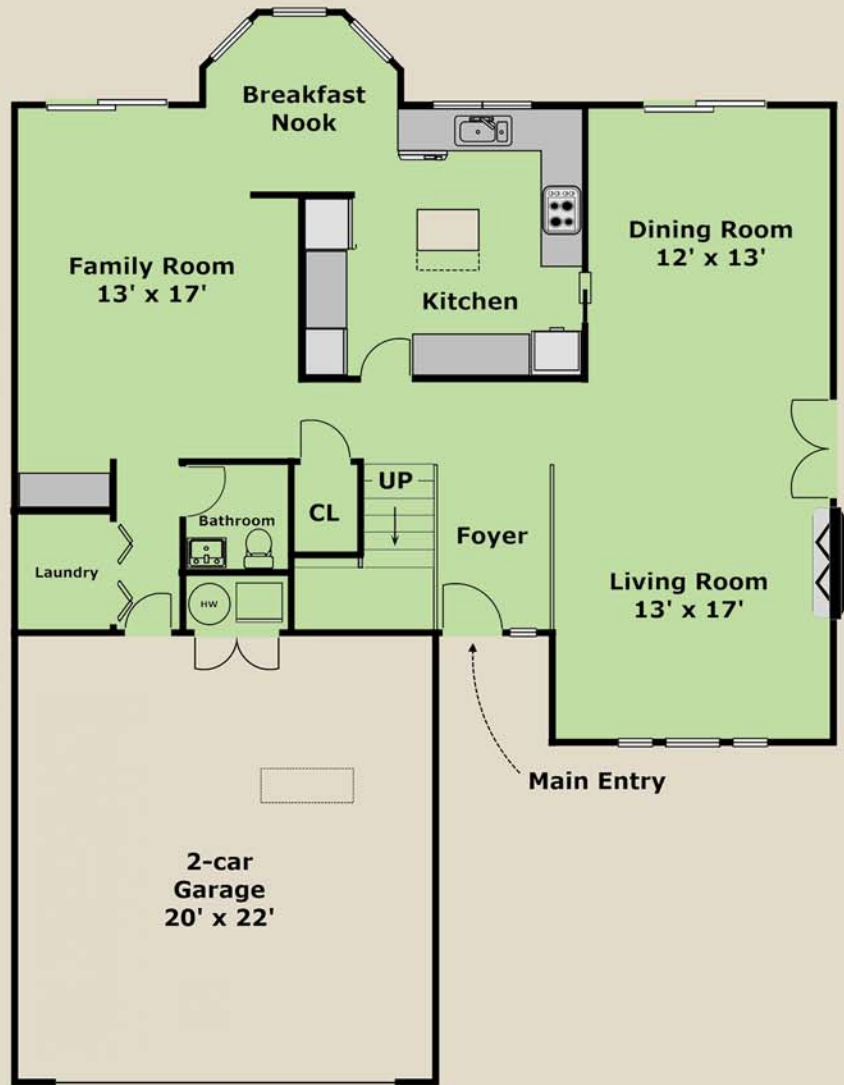
Living Area: Approximately 2,256 Sq.Ft.

Offering Price: \$1,790,000

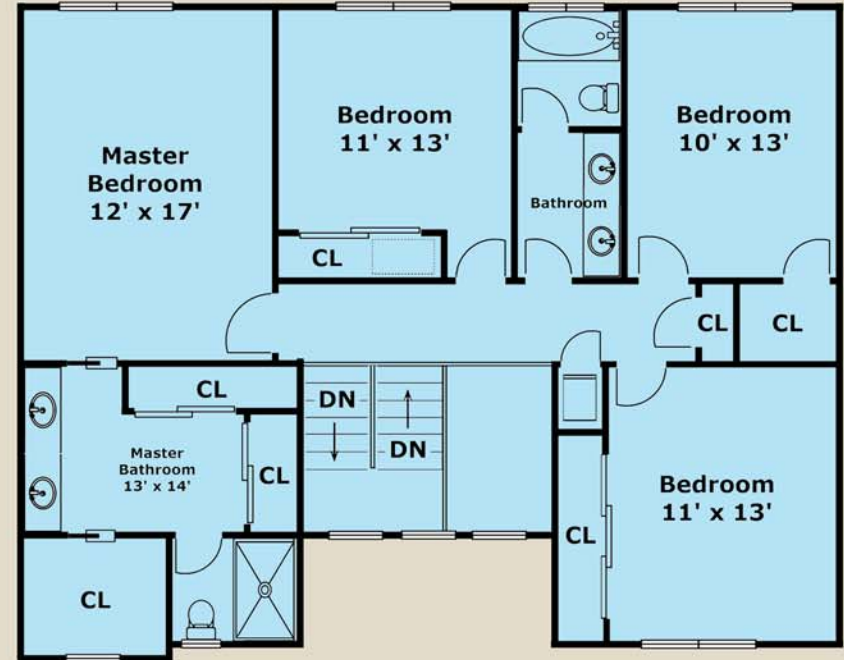
www.Panavista.com/111Sherwood

(510) 523-0707 
PANAVISTA REALTY
2503 Lincoln Avenue, Alameda

FLOOR PLAN FOR 111 SHERWOOD LN, ALAMEDA



Lower Level



Upper Level

Layout and all measurements are approximate,
and not guaranteed to be either exact or to scale.



111 Sherwood Lane, Alameda -- www.Panavista.com/111Sherwood

Built in 1987, 111 Sherwood Lane is a spacious and contemporary two-story Lantern Bay home that has all the comforts of living in a quiet and peaceful neighborhood setting. On the lower level, its unique Ariel floor plan features an open and elegant high-ceiling foyer, an open-concept living room and dining room with hardwood floors, a stone fireplace, and a French door that opens into the sideyard. The roomy kitchen has a tiled floor, granite countertops, lots of cabinet space, a kitchen island, and a pantry, all of which make for an enjoyable cooking experience. With the cozy breakfast nook facing a tranquil backyard, you can enjoy some morning tea or coffee with your favorite treats. The family room is a great place that can easily accommodate family and friends while you are creating your culinary delights. Alternatively, the family room is idyllic for retiring at the end of a tiring day and watching a large-screen television. There is also a washer and dryer tucked away in the laundry closet and a guest bathroom on the lower level.

The expansive ground-hugging deck showcases a pergola-covered hot tub surrounded by mature landscaping. It can be easily accessed from both the dining room and family room with large 6' wide sliding glass doors, making for easy indoor/outdoor entertaining.

The upper level overlooks the foyer below and features a master suite that includes a large master bedroom and a newly remodeled master bathroom with a large dressing area and generous closet space with sliding mirrored doors. There are 3 additional good-sized bedrooms and 1 additional full bathroom on this level.

111 Sherwood is only a few blocks from Shoreline Park, the SF Bay walking and biking trail, and several lagoon trails. Additionally, the estuary nearby offers opportunities for fishing, kayaking and standup paddleboarding. The neighborhood also features a green-belt area complete with a bocce court and a kiddie park with plenty of grass area for children to play and pets to roam. Both Bay Farm Elementary School, a highly desirable Alameda school for young children, and Tillman Park are within walking distance from 111 Sherwood's enviable location. Harbor Bay Isle boasts a library, Harbor Bay Shopping Center, Harbor Bay Health Club, a newly updated municipal golf course, and a Ferry Terminal with direct connections to San Francisco. With all its amenities, 111 Sherwood Lane offers enjoyable living in Harbor Bay Isle and can be a wonderful home for years to come!

Other desirable attributes:

- 2 gas-fired furnaces, one for each level.
- 2-car garage with an attic. Additional attic off an upper level bedroom.
- Approximately 2,256 sq.ft. of living area on an approximately 5,000 sq.ft. lot.



Ramesh, Broker-of-Record
DRE #00870283
Ramesh@Panavista.com
www.Panavista.com
(510) 523-0707

(510) 523-0707 
PANAVISTA REALTY
2503 Lincoln Avenue, Alameda